

Contents

Solution Description..... 2

Environment..... 2

Known Prerequisites 2

UI Integration Summary and Use Case Walkthrough 2

 Oracle Fusion CRM Customer Form..... 2

 Use Case Walkthrough..... 3

Authentication and Authorization 9

Oracle Fusion CRM Web Services Invoked 9

SOAP Request Examples 9

Creating the Postcode Anywhere and Oracle Fusion CRM Integration 10

 Creating the Postcode Anywhere Link (Points 1 and 2 of Integration Flow Diagram) 11

 PCASelect Page Using JQuery/Ajax (Points 3a and 3b of Integration Flow Diagram) 13

 Importing PCA Data (Point 4 of Integration Flow Diagram) 15

 Java Client Proxies for Web Services (Point 5 of the Integration Flow Diagram)..... 16

 Model 16

 Java Web Service Proxies..... 17

Appendixes..... 18

 Appendix A: PCASelect (Full Control of PCA Service Calls) 18

 Appendix B: PCASelect (Surrendering Control of PCA Calls to PCA JavaScript Function) 22

 Appendix C: CreateFCRMSalesPartyREST.java..... 25

 Appendix D: LocationServiceSoapHttpPortClient.java 26

 Appendix E: SalesPartyServiceSoapHttpPortClient.java..... 29

Purpose
 The purpose of this document is to provide detailed instructions for manually re-creating customizations within Oracle Fusion Customer Relationship Management (Oracle Fusion CRM) that are required for the functional integration between the partner application and Oracle Fusion CRM. Other information is provided for context only.

Disclaimer
 The information in this document was valid at the time of document creation.

Solution Description

One of the International Addressing and Validation services provided by Postcode Anywhere (<http://www.postcodeanywhere.co.uk/>) is known as Capture+. This document presents the integration between Oracle Fusion CRM and Postcode Anywhere (PCA) Capture+.

The most common use of this integration is when Oracle Fusion CRM users enter customer information. Oracle Fusion CRM produces a search window to search for addresses already validated and known to PCA. As the user enters the name of the customer, a short list of potential targets is presented, with the list becoming shorter as the user continues entering information. The user selects the proper target and imports the customer address into Oracle Fusion CRM.

The use of PCA ensures that addresses are entered into Oracle Fusion CRM with a high degree of quality and consistency. This mitigates any downstream issues involving unintentional duplicate data entry or other *fuzzy matching* complications.

Environment

Oracle Fusion CRM Release 4 (11.1.4.0.0)

Known Prerequisites

This solution requires that some code be deployed to an external-to-Oracle Fusion CRM application server.

UI Integration Summary and Use Case Walkthrough

Oracle Fusion CRM Customer Form

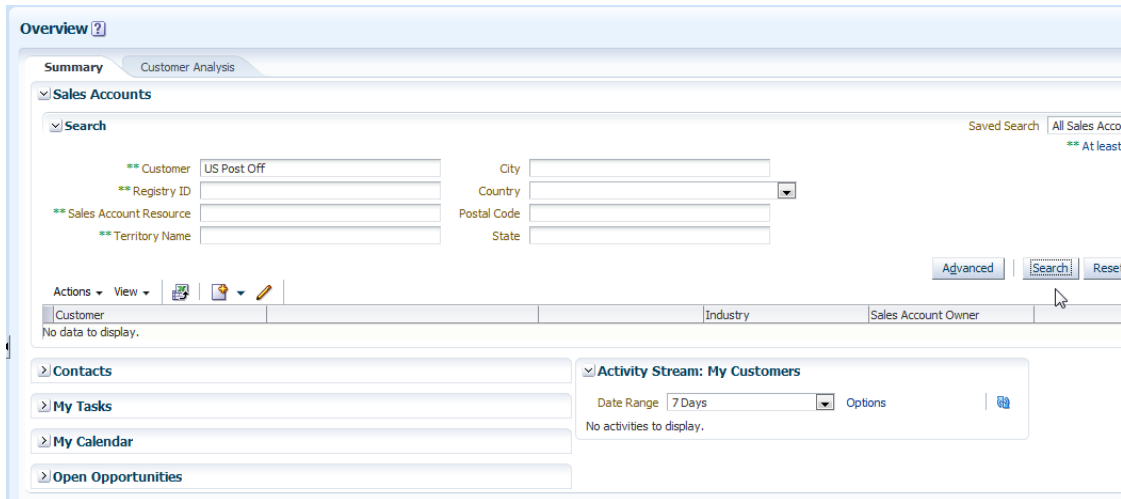
A **Postcode Anywhere Search** link is embedded in the Oracle Fusion CRM Create Customer form. The steps for re-creating this integration of PCA and Oracle Fusion CRM technology are documented in the section [Creating the Postcode Anywhere Link \(Points 1 and 2 of Integration Flow Diagram\)](#).

This link triggers a search when the user begins to enter the address in line 1 or a company name. A web service call is made to get suggested addresses. The user is presented with a list of possible matches. The user can either select the result from that list, which causes another web service call to retrieve the result, or continue to enter information that causes another web service call to get additional address options.

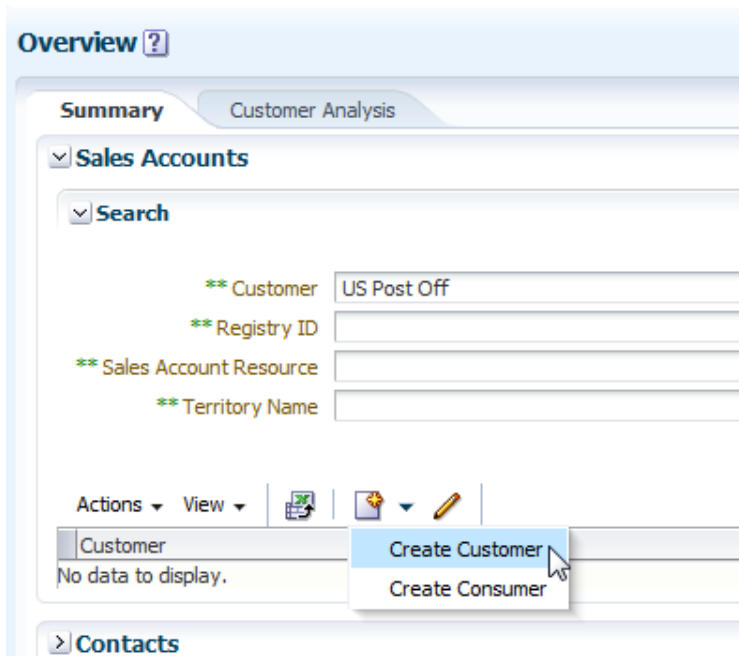
Postcode Anywhere and Oracle Fusion CRM Integration Summary

Use Case Walkthrough

As a logged-in user, you go to the Customer Entry transaction form. As an example, as a sales representative, you wish to add a customer whose address happens to be a post office in New York. You have searched, but you have not found any existing post offices in the Oracle Fusion CRM system.

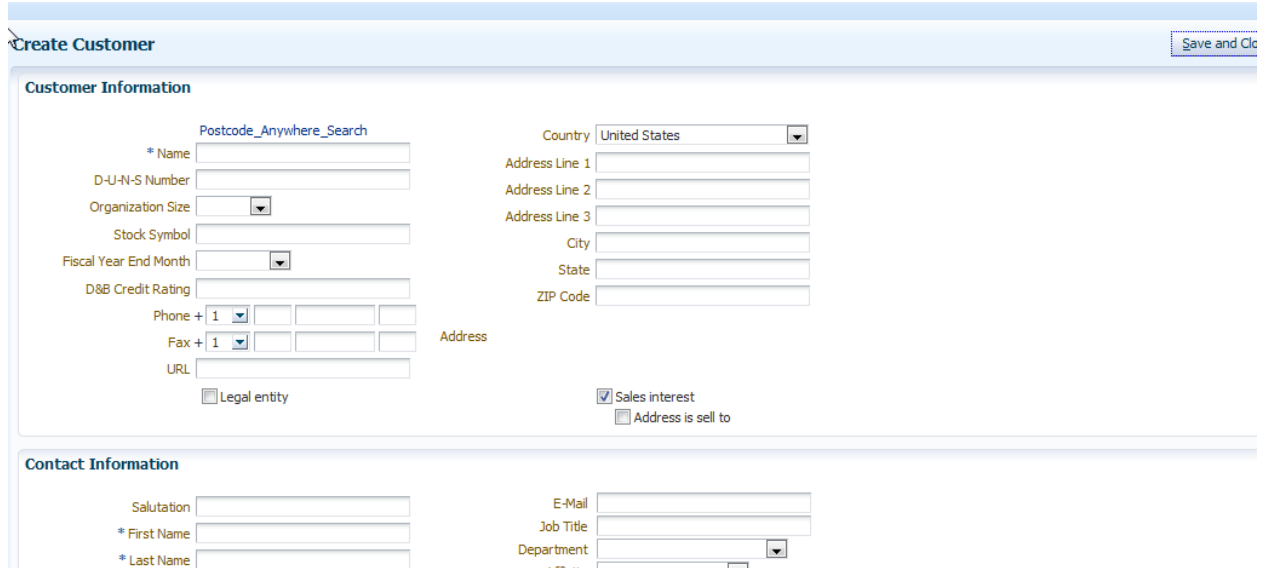


Typically, you will then create a customer.



Postcode Anywhere and Oracle Fusion CRM Integration Summary

If you are unsure of the exact address to enter, you have the option of clicking the **Postcode Anywhere Search** link that is presented on the Oracle Fusion CRM Create Customer form.



Create Customer Save and Close

Customer Information

[Postcode_Anywhere_Search](#)

* Name

D-U-N-S Number

Organization Size

Stock Symbol

Fiscal Year End Month

D&B Credit Rating

Phone +

Fax +

URL

Legal entity

Country

Address Line 1

Address Line 2

Address Line 3

City

State

ZIP Code

Sales interest

Address is sell to

Contact Information

Salutation

E-Mail

* First Name

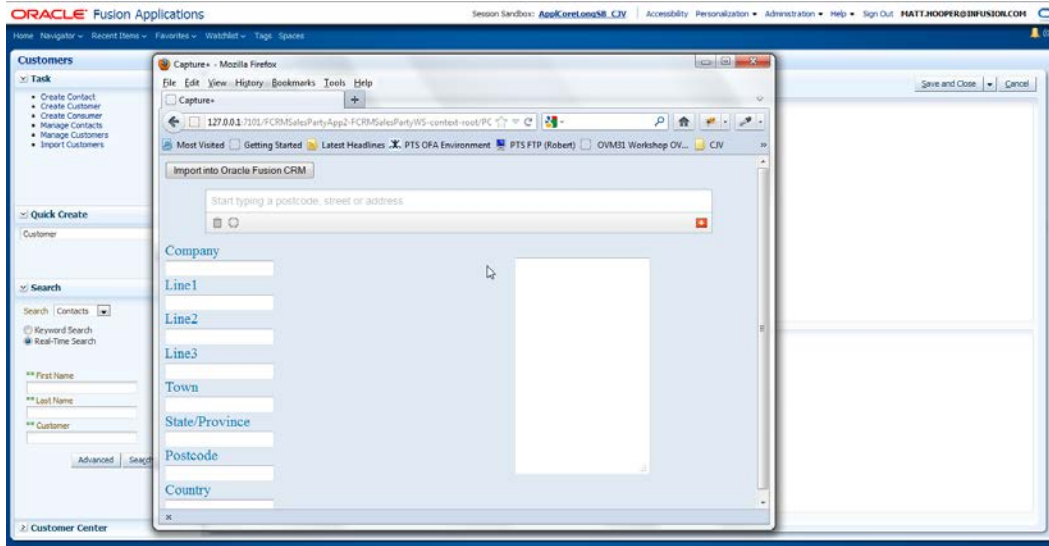
Job Title

* Last Name

Department

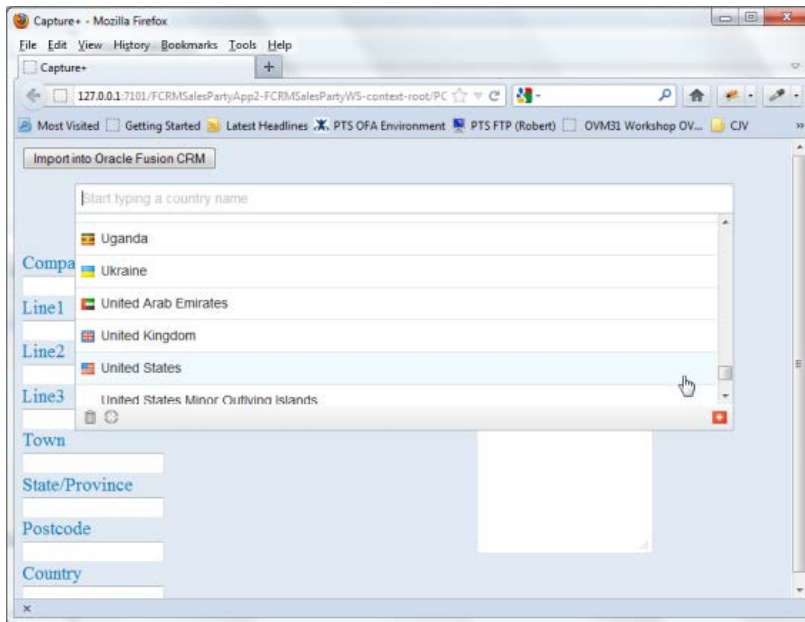
Postcode Anywhere and Oracle Fusion CRM Integration Summary

A browser window appears that provides a search box. The country in which the search is applied can be a preconfigured default, or it can be based upon the location of the user. For demonstration purposes, the latter is the case here.



You switch the scope of the search to United States.

Note: This can be made a default constant value, but this example highlights that PCA is an international address validation tool, valid for many countries.



Postcode Anywhere and Oracle Fusion CRM Integration Summary

As you enter "U," then "S," then space, then "P," and so on, the browser makes calls to PCA and returns a list of potential targets. Each time you enter a letter, the list of targets is reduced, until you see the address for which you are searching.

Import into Oracle Fusion CRM

	US Post Office Bldg, 111, Franklin St, Johnstown PA
	U S Post Office Bldg, 111, Franklin St, Johnstown PA
Compa	U S Post Office Bldg, 111, Franklin St, Room 224-224, Johnstown PA
Line1	U S Post Office, 4602, 21St St, Long Island City NY
Line2	Us Post Office & Courts Bldg, 700, Grant St, Pittsburgh PA
Line3	Us Post Office & Courts Bldg, 700, Grant St, Suite A-A, Pittsburgh PA
Town	Us Post Office Bldg, 750, Florida St, Baton Rouge LA
State/P	Us Post Office Bldg, 809, Nueces Bay Blvd, Corpus Christi TX
Postcode	Us Post Office Bldg, 809, Nueces Bay Blvd, Room 118-118, Corpus Christi TX
Country	

Capture+ PostcodeAnywhere

In this case, the post office in Long Island City, New York:

	U S Post Office Bldg, 111, Franklin St, Johnstown PA
Compa	U S Post Office Bldg, 111, Franklin St, Room 224-224, Johnstown PA
Line1	U S Post Office, 4602, 21St St, Long Island City NY
2800 S A	Us Post Office & Courts Bldg, 700, Grant St, Pittsburgh PA

Postcode Anywhere and Oracle Fusion CRM Integration Summary

Click that post office and the details are displayed in the browser form:

Import into Oracle Fusion CRM

U S Post Office

4602 21st St

Long Island City

New York

11101-9998

US

U S Post Office
4602 21st St
Long Island City
New York
11101-9998

Click the **Import into Oracle Fusion CRM** button. The browser invokes the Oracle Fusion CRM web services required to import this customer into Oracle Fusion CRM. Note the Registry ID (176) is displayed here. It is the Oracle Fusion CRM customer number (PartyNumber) that was just created in Oracle Fusion CRM.

Import into Oracle Fusion CRM

The Sales Party: "U S Post Office", is in Oracle Fusion CRM with Sales Registry ID: 176.

U S Post Office

4602 21st St

Long Island City

New York

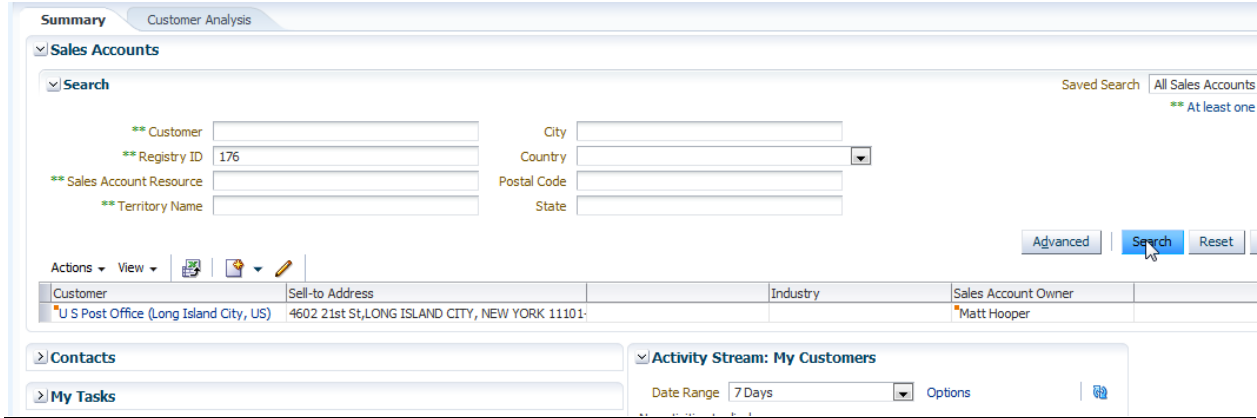
11101-9998

US

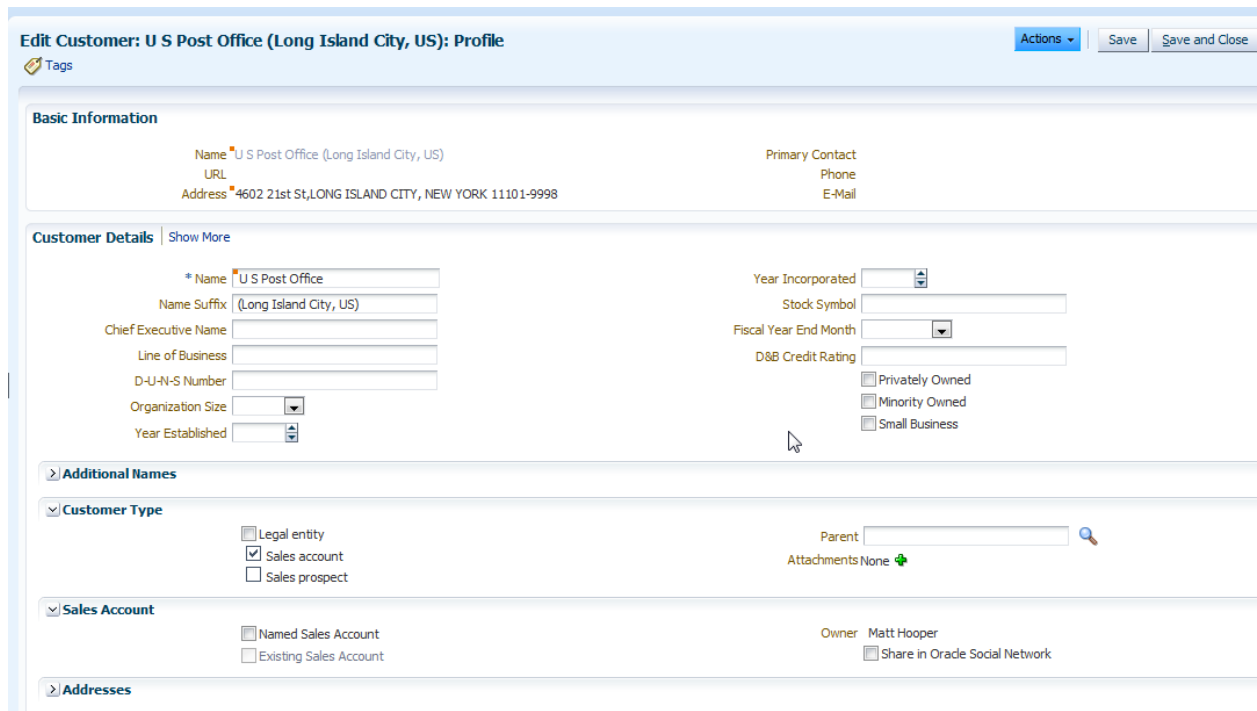
U S Post Office
4602 21st St
Long Island City
New York
11101-9998

Postcode Anywhere and Oracle Fusion CRM Integration Summary

Close the window and return to Oracle Fusion CRM. Search directly on the Registry ID and find the newly imported customer.



At this point, you can update all the information and attributes managed by Oracle Fusion CRM, knowing that the address of this customer has been entered consistently and with a high degree of data quality.



Authentication and Authorization

To request an account for PostCode Anywhere, visit their website

(<http://www.postcodeanywhere.co.uk/>) and click the **Sign-Up** button.

After you register on the Postcode Anywhere site, you will be provided with an API key. This key is to be included in the URL when calling PCA web services, usually using an HTTP GET request, for example:

<https://services.postcodeanywhere.co.uk/CapturePlus/Interactive/AutoComplete/v2.00/json3.ws?key=<PCAClientAPIKey>&Country=US&SearchTerm=Oracle>

You have the option to ask PCA to monitor for any unusual usage patterns to ensure that no one else is using your key.

Oracle Fusion CRM Web Services Invoked

The following services are invoked by Oracle-created code that is to be deployed in an external-to-Oracle Fusion CRM software as a service (SaaS) application server:

- SalesPartyService
 - findSalesParty
 - createSalesParty
- LocationService
 - findLocation
 - createLocation

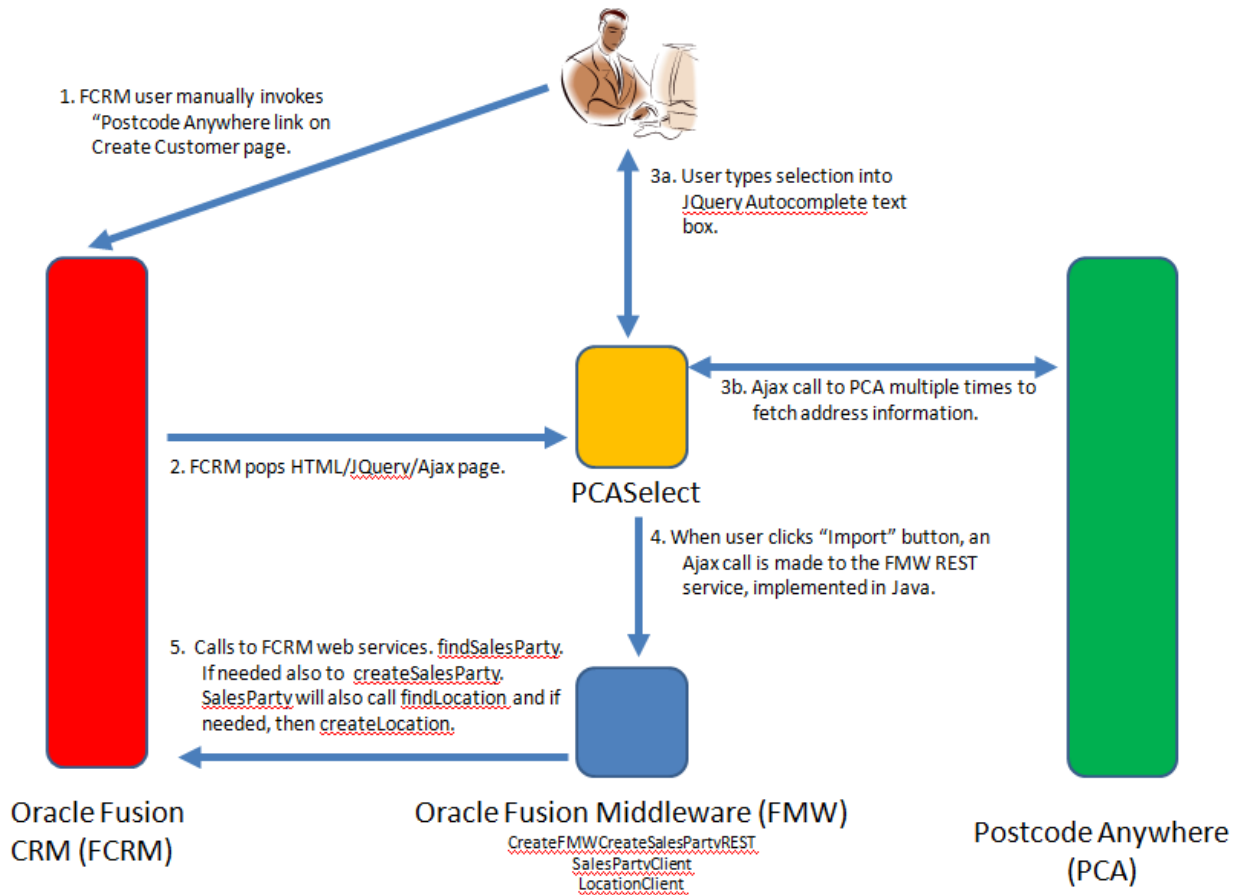
SOAP Request Examples

The SOAP endpoints are invoked by Java web service calls. See the extensive example code in the [Appendixes](#).

Postcode Anywhere and Oracle Fusion CRM Integration Summary

Creating the Postcode Anywhere and Oracle Fusion CRM Integration

The integration flow is depicted in the following diagram. The enumerated flows will be discussed in more detail to explain how to implement the integration.



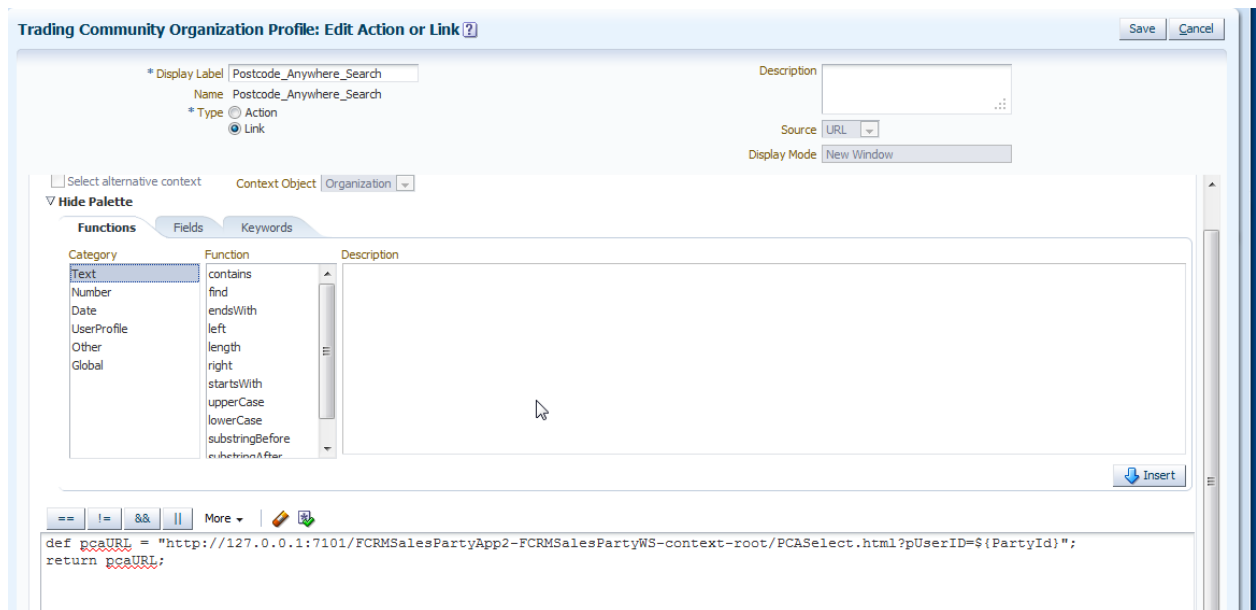
Postcode Anywhere and Oracle Fusion CRM Integration Summary

Creating the Postcode Anywhere Link (Points 1 and 2 of Integration Flow Diagram)

Follow these steps to add the Postcode Anywhere link (backed by a Groovy script detailed as follows) to the Create object. The URL provides the Postcode Anywhere application and passes some identifier parameters:

1. Select **Navigator**, then **Tools**, and then **Application Composer**.
2. From the Oracle Fusion CRM application drop-down list, select the **Common** application.
3. Expand the **Standard Objects** tree node.
4. Expand the **Trading Community Organization Profile** object node.
5. Click the **Actions and Links** link.
6. At the top of the Actions and Links table, click the **Create** button.
7. Set Display Label to **Postcode Anywhere Search**.
8. Set Name to **Postcode Anywhere Search**.
9. Set Type to **Link** (source should automatically set to **URL**).
10. In the script text field, copy and paste this Groovy script:

```
def pcaURL = "http://127.0.0.1:7101/FCRMSalesPartyApp2-FCRMSalesPartyWS-
context-root/PCASelect.html?pUserID=${PartyId}";
return pcaURL
```



11. After pasting the script, click the Groovy expression validation icon to verify that the script is valid.
12. After validation is successful, save the link definition and exit the edit screen.
13. Click the **Pages** icon.

Postcode Anywhere and Oracle Fusion CRM Integration Summary

14. Click the **Edit Customer Quick Creation Form**.
15. In the **Configure Detail Form**, move **Postcode Anywhere Search** from the **Available Fields** list to the **Selected Fields** list and move the link to the desired position.

Edit Customer Quick Creation Form ?

Object Name Organization

Configure Detail Form

Select the fields to appear on this object's creation page.

Available Fields	Selected Fields
Analysis Year	Postcode_Anywhere_Search - Link
Bank Code	Organization Name
Bank or Branch Number	D-U-N-S Number
Branch Code	OrganizationSize
Branch indicator	Stock Symbol
Business Scope	Fiscal Year End Month
Chief Executive Name	D&B Credit Rating
Chief Executive Title	Group of Fields 1
Comments	Group of Fields 2
Common Business Identifier	URL
Common Business Identifier Type	
Congressional District	

16. Click **Save and Close**.

Postcode Anywhere and Oracle Fusion CRM Integration Summary

PCASelect Page Using JQuery/Ajax (Points 3a and 3b of Integration Flow Diagram)

The value proposition of Postcode Anywhere (PCA) is best exposed when the calls to PCA are embedded in a dynamic client. A browser page appears and includes elements of JQuery/JavaScript to achieve active, client-side effects, especially AutoComplete. Within a JQuery program, you can dynamically call the PCA web services by using [Ajax](#) ([http://en.wikipedia.org/wiki/Ajax_\(programming\)](http://en.wikipedia.org/wiki/Ajax_(programming))) technology.

There are some well-known limitations on using Ajax to call certain services. The most well-known is the Cross Domain issue. By design, most implementations of Ajax have a default implementation that inhibits browsers from making calls to services in other domains. There are some workarounds to these limitations, such as the [Cross-Origin Resource Sharing – CORS](#) (http://en.wikipedia.org/wiki/Cross-origin_resource_sharing) approach, which involves setting the HTTP header prior to sending the service request. However, the implementation of this approach is subject to various interpretations by both browsers and servers. Due to its relatively recent arrival, different browsers and servers implement CORS with different behaviors.

For this reason, the Ajax calls using the [JavaScript Object Notation - JSON](#) (<http://en.wikipedia.org/wiki/JSON>) approach has been chosen for implementation. Due to its maturity as an approach, it seems to have a much more consistent implementation across heterogeneous environments. Fortunately, Postcode Anywhere exposes its services using JSON (as well as XML/SOAP). In particular, the PCA JSON endpoints used are:

- AutoComplete, for example, <https://services.postcodeanywhere.co.uk/CapturePlus/Interactive/AutoComplete/v2.00/json3.ws?key=<PCAClientKey>&Country=US&SearchTerm=Oracle>
- RetrieveById, for example, <https://services.postcodeanywhere.co.uk/CapturePlus/Interactive/RetrieveById/v2.00/json3.ws?key=<PCAClientKey>&Id=<AnIdFromAutoComplete>>

The approach is first to call AutoComplete and pass in SearchTerm. A JSON message will be returned similar to the following:

```
{ "Items": [ { "Id": "USA|CT|321|", "Match": "Oracle", "Suggestion": "AZ", "IsRetrievable": false, "AutoSelect": false }, { "Id": "USA|ST|1721|1240796|", "Match": "Oracle", "Suggestion": " Blvd, Colorado Springs CO", "IsRetrievable": false, "AutoSelect": false }, { "Id": "USA|PR|41932829|0", "Match": "Oracle", "Suggestion": " Corp, 500, Oracle Pkwy, Redwood City CA", "IsRetrievable": false, "AutoSelect": false }, { "Id": "USA|PR|28026247|0", "Match": "Oracle", "Suggestion": " Corporation, 233, S Wacker Dr, Suite 4500, Chicago IL", "IsRetrievable": false, "AutoSelect": false }, { "Id": "USA|ST|2455|592122|", "Match": "Oracle", "Suggestion": " Ct, Ellijay GA", "IsRetrievable": false, "AutoSelect": false }, { "Id": "USA|ST|29650|592122|", "Match": "Oracle", "Suggestion": " Ct, Johnson City TN", "IsRetrievable": false, "AutoSelect": false }, { "Id": "USA|ST|3686|592122|", "Match": "Oracle", "Suggestion": " Ct, Newbury Park CA", "IsRetrievable": false, "AutoSelect": false }, { "Id": "USA|ST|3686|5921230|", "Match": "Oracle", "Suggestion": " Long Island", "IsRetrievable": false, "AutoSelect": false } ] }
```

Postcode Anywhere and Oracle Fusion CRM Integration Summary

This is an array containing possible matches. Note the ID field. For each row in the array, call RetrieveById, passing in the ID for that row. For each call, a JSON array is received. As an illustration, if the ID "USA|ST|2455|592122|" (the ID for Oracle in Johnson City) is passed, a message similar to this is received:

```
{ "Items": [ { "FieldGroup": "Common", "FieldName": "Id", "FormattedValue": "USA|ST|2455|592122|", "FieldType": "Unknown", "FieldSequence": 0, "Language": "ENG" }, { "FieldGroup": "Common", "FieldName": "Company", "FormattedValue": "", "FieldType": "Unknown", "FieldSequence": 1, "Language": "ENG" }, { "FieldGroup": "Common", "FieldName": "Line1", "FormattedValue": "Oracle Ct", "FieldType": "Unknown", "FieldSequence": 2, "Language": "ENG" }, { "FieldGroup": "Common", "FieldName": "Line2", "FormattedValue": "", "FieldType": "Unknown", "FieldSequence": 3, "Language": "ENG" }, { "FieldGroup": "Common", "FieldName": "City", "FormattedValue": "Ellijay", "FieldType": "Unknown", "FieldSequence": 4, "Language": "ENG" }, { "FieldGroup": "Common", "FieldName": "ProvinceCode", "FormattedValue": "GA", "FieldType": "Unknown", "FieldSequence": 5, "Language": "ENG" }, { "FieldGroup": "Common", "FieldName": "ProvinceName", "FormattedValue": "Georgia", "FieldType": "Unknown", "FieldSequence": 6, "Language": "ENG" }, { "FieldGroup": "Common", "FieldName": "CountryCode", "FormattedValue": "USA", "FieldType": "Unknown", "FieldSequence": 7, "Language": "ENG" }, { "FieldGroup": "Common", "FieldName": "CountryName", "FormattedValue": "United States", "FieldType": "Unknown", "FieldSequence": 8, "Language": "ENG" }, { "FieldGroup": "Common", "FieldName": "PostalCode", "FormattedValue": "30540", "FieldType": "Unknown", "FieldSequence": 9, "Language": "ENG" }, { "FieldGroup": "Common", "FieldName": "Type", "FormattedValue": "Residential", "FieldType": "Unknown", "FieldSequence": 10, "Language": "ENG" }, { "FieldGroup": "Common", "FieldName": "District", "FormattedValue": "", "FieldType": "Unknown", "FieldSequence": 11, "Language": "ENG" }, { "FieldGroup": "Common", "FieldName": "SubBuilding", "FormattedValue": "", "FieldType": "Unknown", "FieldSequence": 12, "Language": "ENG" }, { "FieldGroup": "Common", "FieldName": "BuildingNumber", "FormattedValue": "", "FieldType": "Unknown", "FieldSequence": 13, "Language": "ENG" }, { "FieldGroup": "Common", "FieldName": "BuildingName", "FormattedValue": "", "FieldType": "Unknown", "FieldSequence": 14, "Language": "ENG" }, { "FieldGroup": "Common", "FieldName": "Street", "FormattedValue": "Oracle Ct", "FieldType": "Unknown", "FieldSequence": 15, "Language": "ENG" }, { "FieldGroup": "Common", "FieldName": "Label", "FormattedValue": "Oracle Ct\nEllijay GA 30540\nUnited States", "FieldType": "Unknown", "FieldSequence": 16, "Language": "ENG" }, { "FieldGroup": "Common", "FieldName": "AdminAreaCode", "FormattedValue": "123", "FieldType": "Unknown", "FieldSequence": 17, "Language": "ENG" }, { "FieldGroup": "Common", "FieldName": "AdminAreaName", "FormattedValue": "Gilmer", "FieldType": "Unknown", "FieldSequence": 18, "Language": "ENG" }, { "FieldGroup": "Common", "FieldName": "CountryCode2", "FormattedValue": "US", "FieldType": "Unknown", "FieldSequence": 19, "Language": "ENG" }, { "FieldGroup": "Country", "FieldName": "Urbanization", "FormattedValue": "", "FieldType": "Unknown", "FieldSequence": 0, "Language": "ENG" }, { "FieldGroup": "Country", "FieldName": "ZIP", "FormattedValue": "30540", "FieldType": "Unknown", "FieldSequence": 1, "Language": "ENG" }, { "FieldGroup": "Country", "FieldName": "AddOn", "FormattedValue": "", "FieldType": "Unknown", "FieldSequence": 2, "Language": "ENG" }, { "FieldGroup": "Country", "FieldName": "POBox", "FormattedValue": "", "FieldType": "Unknown", "FieldSequence": 3, "Language": "ENG" }, { "FieldGroup": "Country", "FieldName": "StreetPrefixDirection", "FormattedValue": "", "FieldType": "Unknown", "FieldSequence": 4, "Language": "ENG" }, { "FieldGroup": "Country", "FieldName": "StreetName", "FormattedValue": "Oracle", "FieldType": "Unknown", "FieldSequence": 5, "Language": "ENG" }, { "FieldGroup": "Country", "FieldName": "StreetType", "FormattedValue": "Ct", "FieldType": "Unknown", "FieldSequence": 6, "Language": "ENG" }, { "FieldGroup": "Country", "FieldName": "StreetSuffixDirection", "FormattedValue": "", "FieldType": "Unknown", "FieldSequence": 7, "Language": "ENG" } ] }
```

Each array item represents an attribute of the address. Certain address attributes that are of interest are extracted and presented to the user. The user will manually decide if one of these results fulfills the search.

For flexibility, two versions of the PCASelect.html page are created:

- In the first version, full control of the calls to the PCA APIs is managed by the PCASelect.html page itself. A call is made to AutoComplete and then there are multiple calls to RetrieveById for each returned array item.
- In the second version, a JavaScript function that is directly supported by Postcode Anywhere is leveraged. The APIs are not directly invoked. Rather, the Postcode Anywhere JavaScript function is invoked and returns a document with fields that can be accessed. The PCA JavaScript also has a prebuilt AutoComplete select field that allows the user to specify the country prior to invoking the APIs. This is the version used in the Use Case Walkthrough presented earlier.

For a complete listing of both approaches to the the PCASelect code, see the [Appendixes](#).

Importing PCA Data (Point 4 of Integration Flow Diagram)

Regardless of which approach is used to call the PCA APIs and present the response, at some point the sales representative clicks the **Import to Oracle Fusion CRM** button and the Oracle Fusion CRM web services are called to import the customer and address into Oracle Fusion CRM.

As discussed earlier in this document, there are some challenges to be faced when calling from a client browser to SOAP web services. Despite using CORS to avoid cross-origin issues, the various implementations cannot yet be relied upon to produce consistent behavior. As a consequence, a JSON approach is used to mitigate those issues when calling PCA APIs. However, Oracle Fusion CRM does not expose JSON services. Instead, it exposes SOAP web services.

Therefore, to ensure consistent behavior of the application, a Representational State Transfer (REST) service in Java, resident in the same application server that is supporting the PCASelect page, has been chosen for implementation. This avoids any cross-origin issues. This service must be deployed to an application server that is external to both Oracle Fusion CRM (SaaS) and PCA.

The REST service calls Java code that is resident in the same server. See the section [Java Client Proxies for Web Services \(Point 5 of the Integration Flow Diagram\)](#) for the details of that code.

To expose Java methods as REST services, the open source [Jersey JAX-RS](#) (<http://jersey.java.net/>) project is leveraged. Attached to this document is a zip file that contains the Java code, organized in an Oracle JDeveloper application. The Jersey .jar files are resident in the public_html/lib directory of the FCRMSalesPartyWS project. To extract the attached file named **PCAFCRMSalesPartyApp.zippy**:

1. Right click on the **Attachment** icon here.
2. Select **Save Embedded File to Disk**.
3. Locate the saved file. Change the file extension to .zip. Right click on the file and **Rename** the file from **PCAFCRMSalesPartyApp.zippy** to **PCAFCRMSalesPartyApp.zip**.
4. Extract the contents of the zipped file.

For the full listing of the REST Java service, see [Appendix C: CreateFCRMSalesPartyREST.java](#).

Java Client Proxies for Web Services (Point 5 of the Integration Flow Diagram)

Model

Oracle Fusion CRM exposes SOAP web services for many business objects in Oracle Fusion CRM. The main business object of concern here is SalesParty. SalesParty contains all the information related to a customer. SalesParty has a flexible hierarchy of information that can be represented loosely as:

- SalesParty
 - OrganizationParty
 - OrganizationProfile
 - PartySite
 - ✓ PartySiteUse (contains a foreign-key reference to Location)
 - PartyUsageAssignment
 - SalesAccount
 - SalesAccountResource
 - OrganizationDetails

To create SalesParty, you must build a SOAP message that reflects this hierarchy.

If you create SalesParty without SalesAccount, it is classified as a Sales Prospect. To view Sales Prospect in the Oracle Fusion CRM user interface, go to a Real-Time search, which is sometimes not an intuitive step for casual users of Oracle Fusion CRM. To avoid that requirement, create any SalesParty with SalesAccount.

SalesAccount is required to have one SalesResource assigned. Therefore, create SalesResource, which is the PartyId of the sales representative who started the whole process. A Groovy script is used in the Oracle Fusion CRM **Postcode Anywhere Search** link (detailed in the [Appendixes](#)) to discover the PartyId of the sales representative in Oracle Fusion CRM and then pass that information through to the creation of SalesParty and SalesResource.

Also, note that the PartySiteUse node contains a foreign-key reference to Location. Therefore, you must pass the address information to LocationClient. LocationClient will call the Oracle Fusion CRM Location web service methods and return the LocationId of an existing Location with the same information, or the LocationId of a newly created Location. This new Location will be included in the SalesParty -- Organization Party -- PartySite node.

Java Web Service Proxies

To call the SalesParty and Location web services previously mentioned from Java, you must create Java web service proxies. The Oracle JDeveloper (JDEV) wizard is used to generate these proxies. The proxies help to invoke the various methods to prepare the JAXB elements that will be submitted as the SOAP message.

The Oracle Fusion CRM web services are very robust and provide a wide range of methods with which to manipulate the business objects. Because there are so many methods contained in the services, the JDEV wizard generates a large amount of code and files. Rather than include all of that auto-generated code in this document, you are encouraged to access the JDEV application that is included in this document and examine the content in the JDeveloper application.

However, the web services proxy client code is included in this document. This is code that has been written to create the SOAP messages and invoke the web services. The JDEV wizard creates an empty shell for the client. All the needed method calls are added to that shell. The JDEV naming convention for these shells is <ServiceName>SoapHttpClient.java. In this case, there are two clients called SalesPartyServiceSoapHttpClient.java and LocationServiceSoapHttpClient.java.

See the [Appendixes](#) for the complete listings for both of these clients.

Appendixes

Appendix A: PCASelect (Full Control of PCA Service Calls)

```

<html>
<head>
<style>
  body {
    color:#0476B3;
    background-color:#E0E9F3;
    font-family:"Times New Roman", Times, serif;
    font-size:24px;
  }

  .ui-autocomplete {
    position: absolute;
    top: 100%;
    left: 0;
    z-index: 1000;
    float: left;
    display: none;
    min-width: 160px;
    padding: 20px 0;
    margin: 2px 0 0 0;
    list-style: none;
    color: #0476B3;
    font-size: 18px;
    background-color: ##E0E9F3;
    border-color: #ccc;
    border-color: rgba(0, 0, 0, 0.2);
    border-style: solid;
    border-width: 1px;
    -webkit-border-radius: 5px;
    -moz-border-radius: 5px;
    border-radius: 5px;
    -webkit-box-shadow: 0 5px 10px rgba(0, 0, 0, 0.2);
    -moz-box-shadow: 0 5px 10px rgba(0, 0, 0, 0.2);
    box-shadow: 0 5px 10px rgba(0, 0, 0, 0.2);
    -webkit-background-clip: padding-box;
    -moz-background-clip: padding;
    background-clip: padding-box;
    *border-right-width: 2px;
    *border-bottom-width: 2px;

    .ui-menu-item > a.ui-corner-all {
      display: block;
      padding: 3px 15px;
      clear: both;
      font-weight: normal;
      line-height: 14px;
      color: ##0476B3;
      font-color: ##0476B3;
      white-space: nowrap;

      &.ui-state-hover, &.ui-state-active {
        color: ##0476B3;
        text-decoration: none;
        background-color: #0088cc;
        border-radius: 0px;
        -webkit-border-radius: 0px;
        -moz-border-radius: 0px;
        background-image: none;
      }
    }
  }
</style>
<script language="javascript" src="jquery-1.8.2.js"></script>
<script src="jquery-ui.js"></script>
<script type="text/javascript">

$(function(){
var pcaResultsArray = [{label: "",
                        value: ""}];

function pcaRetrieveById(key,Id,j,pcaSearchTerm) {

    var url = 'https://services.postcodeanywhere.co.uk/CapturePlus/Interactive/RetrieveById/v2.00/json3.ws?Key=' + key +
    '&Id=' + Id;
    // var url = "pcajsonRetrieveById_" + j + ".ws"; // this calls pre-fetched results to avoid using PCA credits during
    testing.

    var jqxhr = $.ajax({url:url,
                        type: "get",
                        dataType: 'json'
    });
  }
}

```

Postcode Anywhere and Oracle Fusion CRM Integration Summary

```

.done (function(response){})
.fail (function (XHR, textStatus, errorThrown) {
    $('pcaResult').append(XHR);
    $('pcaResult').append(textStatus);
    $('pcaResult').append(errorThrown);
})
.always(function(response){
    // initialize variables in case they have been set before
    var pcaId = '';
    var pcaCompany = '';
    var pcaLine1 = '';
    var pcaLine2 = '';
    var pcaCity = '';
    var pcaProvinceCode = '';
    var pcaProvinceName = '';
    var pcaCountryCode = '';
    var pcaPostalCode = '';
    var pcaPOBox = '';

    for (var i = 0; i < response.Items.length; i++) {
        var Item = response.Items[i];

        switch (Item.FieldName)
        {
            case "Id":
                pcaId = Item.FormattedValue;
                break;
            case "Company":
                pcaCompany = Item.FormattedValue;
                break;
            case "Line1":
                pcaLine1 = Item.FormattedValue;
                break;
            case "Line2":
                pcaLine2 = Item.FormattedValue;
                break;
            case "City":
                pcaCity = Item.FormattedValue;
                break;
            case "ProvinceCode":
                pcaProvinceCode = Item.FormattedValue;
                break;
            case "ProvinceName":
                pcaProvinceName = Item.FormattedValue;
                break;
            case "CountryCode":
                pcaCountryCode = Item.FormattedValue;
                break;
            case "PostalCode":
                pcaPostalCode = Item.FormattedValue;
                break;
            case "POBox":
                pcaPOBox = Item.FormattedValue;
                break;
            default:
                break;
        } // end of switch
    } // end of for loop

    // $('pcaResult').append(outputline);
    var outputline = "";
    if (pcaCompany == null || pcaCompany == ""){
        outputline += pcaSearchTerm;
    } else {
        outputline += pcaCompany;
    }
    outputline += ":";
    outputline += pcaLine1;
    outputline += ":";
    outputline += pcaCity;
    outputline += ":";
    outputline += pcaProvinceName;
    outputline += ":";
    outputline += pcaPostalCode;
    outputline += ":";
    outputline += pcaCountryCode;

    pcaResultsArray[j] = { label: outputline, value: outputline };
}); // end of always and jqxhr

} // end of pcaRetrievById

function pcaSearch (key,SearchTerm) {

    var url = "https://services.postcodeanywhere.co.uk/CapturePlus/Interactive/AutoComplete/v2.00/json3.ws";
    url += "?Key=" + key;
    url += "&Country=US";
    url += "&SearchTerm=" + SearchTerm;

```

Postcode Anywhere and Oracle Fusion CRM Integration Summary

```

// url = 'pcajson.ws'; // this calls a pre-fetched result during testing to avoid using PCA credits. Overrides pca url
above when uncommented.

var jqxhr = $.ajax({url: url,
                    type: "get",
                    dataType: 'json'
                  })
.done (function(response){})
.fail (function (XHR, textStatus, errorThrown) {
        $('.pcaResult').append(XHR);
        $('.pcaResult').append(textStatus);
        $('.pcaResult').append(errorThrown);
    })
.always(function(response){
        // pcaResultsArray = [{label:"Search Item Not Found"
        //                      , value:"Search Item Not Found"
        //                      }];
        var itemsLength = response.Items.length;
        itemsLength = itemsLength - 1;
        for (var i = 1; i < itemsLength; i++) { //starting from 1 because 0 has error in test file switch
to 0 in prod
                var Item = response.Items[i];
                pcaRetrieveById(key,Item.Id,i,SearchTerm);
            } // end of for loop
        }); // end of always and var jqxhr
    } // end of pcaSearch

$("#pcaResults").autocomplete({
    //minLength : 4,
    // delay : 3,
    scroll: true,
    position: { collision: "flip" },
    source : function(request, response) {
        pcaSearch('KY95-DJ54-TT62-XN69', request.term);
        for (var k = 0; k < pcaResultsArray.length; k++) { //starting from 1 because 0 has error in test file
switch to 0 in prod
                if (pcaResultsArray[k] == "") {
                    pcaResultsArray[k] = [null];
                } // end of if
            } // end of for loop
            response(pcaResultsArray);
        } // end of source function
    }); //end of autocomplete
}); // end of outer function

function pcaImportIntoFcrm(form,pFcrmUserID) {

    var pca = form.pcaResults.value;
    var pcastrs = pca.split(':');

    var pcaCompany      = pcastrs[0];
    var pcaLine1        = pcastrs[1];
    var pcaLine2        = pcastrs[2];
    var pcaLine3        = pcastrs[3];
    var pcaCity         = pcastrs[4];
    var pcaProvinceName = pcastrs[5];
    var pcaPostalCode   = pcastrs[6];
    var pcaCountryCode  = pcastrs[7];

    var url = "";
    url += 'http://127.0.0.1:7101/FCRMSalesPartyApp2-FCRMSalesPartyWS-context-root/jersey/createFCRMSalesParty';
    url += "?pPartyName=";
    url += pcaCompany;
    url += "&pAddress1=" ;
    url += pcaLine1;
    url += "&pAddress2=" ;
    url += pcaLine2;
    url += "&pAddress3=" ;
    url += pcaLine3;
    url += "&pCity=";
    url += pcaCity;
    url += "&pState=";
    url += pcaProvinceName;
    url += "&pPostalCode=";
    url += pcaPostalCode;
    url += "&pCountry=";
    url += "US"; // hardcoding to US for now because pcaCountryCode returns USA.
    url += "&pFcrmUserID=";
    url += pFcrmUserID;

    var jqXHR = $.ajax({
        type: 'GET',
        url: url,
        dataType: 'html',
        beforeSend: function (XHR){
            XHR.setRequestHeader("Access-Control-Allow-Origin", "*");
        }
    })
    .done (function(response){})
    .fail (function (XHR, textStatus, errorThrown) {
        $('.pcaResult').append(XHR);
    });
}

```

Postcode Anywhere and Oracle Fusion CRM Integration Summary

```
                $('.pcaResult').append(textStatus);
                $('.pcaResult').append(errorThrown);
            })
            .always(function(response){
                $('.pcaResult').append(response);
            }); // end of always and var jqxhr
        }
    }
</script>
</head>

<body onload="resizeTo(1200,400);moveTo(200,200);">

<script type="text/javascript">
    var searchTermURL          = document.URL;
    var searchTermURLsplit    = searchTermURL.split("?");
    var searchTermURLsplitAgain = searchTermURLsplit[1].split("=");
    var pFcrmUserID           = searchTermURLsplitAgain[1];
</script>
<div id="container">
    <FORM NAME="pcaSearchTermForm" ACTION="" METHOD="GET">
        <INPUT TYPE="button" NAME="button" Value="Import into Oracle FCRM" onClick="pcaImportIntoFcrm(this.form,pFcrmUserID)">
        <label for="pcaResults">Enter Postcode Anywhere Search Term: </label>
        <p>
            <input id="pcaResults" size=75/>
        </FORM>
    </div>

<div id="pcaResult" class="pcaResult">
</div>

</body>
</html>
```

Appendix B: PCASelect (Surrendering Control of PCA Calls to PCA JavaScript Function)

```

<!DOCTYPE html>
<html>
  <head>
    <meta content="" />
    <title>Capture+</title>
    <meta http-equiv="X-UA-Compatible" content="IE=9" />

    <script language="javascript" src="jquery-1.8.2.js" type="text/javascript"></script>
    <script src="jquery-ui.js"></script>
    <script type="text/javascript" src="https://www.postcodeanywhere.co.uk/scripts/main-1-0.js"></script>

    <style type="text/css">

      body {
        color:#0476B3;
        background-color:#E0E9F3;
        font-family:'Times New Roman', Times, serif;
        font-size:20px;
      }

      .ui-helper-clearfix:after
      {
        content: inherit;
      }
      .ui-datepicker
      {
        padding: 0px;
      }
      .pcaAutoComplete .inputArea .search
      {
        top: 1px;
      }
    </style>
  </head>
  <body onload="resizeTo(850,650);moveTo(200,200);">

  <script type="text/javascript">
    function CapturePlusCallback(uid, response) {

      var addressLabel = "";
      if (document.getElementById('CompanyParts').value != "") {
        addressLabel += document.getElementById('CompanyParts').value + "\n";
      }
      if (document.getElementById('Line1Parts').value != "") {
        addressLabel += document.getElementById('Line1Parts').value + "\n";
      }
      if (document.getElementById('Line2Parts').value != "") {
        addressLabel += document.getElementById('Line2Parts').value + "\n";
      }
      if (document.getElementById('Line3Parts').value != "") {
        addressLabel += document.getElementById('Line3Parts').value + "\n";
      }
      if (document.getElementById('TownParts').value != "TownParts") {
        addressLabel += document.getElementById('TownParts').value + "\n";
      }
      if (document.getElementById('CountyParts').value != "CountyParts") {
        addressLabel += document.getElementById('CountyParts').value + "\n";
      }
      if (document.getElementById('PostcodeParts').value != "") {
        addressLabel += document.getElementById('PostcodeParts').value + "\n";
      }
      if (document.getElementById('CountryParts').value != "CountryParts") {
        addressLabel += document.getElementById('CountryParts').value + "\n";
      }
      document.getElementById('AddressLabel').value = addressLabel;
    }

    function pcaImportIntoFcrm(form,pFcrmUserID) {
      var url = "";
      url += 'http://127.0.0.1:7101/FCRMSalesPartyApp2-FCRMSalesPartyWS-context-root/jersey/createFCRMSalesParty';
      url += "?pPartyName=";
      url += document.getElementById('CompanyParts').value;
      url += "&pAddress1=" ;
      url += document.getElementById('Line1Parts').value;
      url += "&pAddress2=" ;
      url += document.getElementById('Line2Parts').value;
      url += "&pAddress3=" ;
      url += document.getElementById('Line3Parts').value;
      url += "&pCity=";
      url += document.getElementById('TownParts').value;
      url += "&pState=";
      url += document.getElementById('CountyParts').value;
      url += "&pPostalCode=";
      url += document.getElementById('PostcodeParts').value;
      url += "&pCountry=";
      //url += document.getElementById('CountryParts').value;
      url += "US" // This is hardcoded until we get the country passed.
    }
  </script>

```

Postcode Anywhere and Oracle Fusion CRM Integration Summary

```

url += "&pFcrmUserID=";
url += pFcrmUserID;

var jqXHR = $.ajax({
    type: 'GET',
    url: url,
    dataType: 'html',
    beforeSend: function (XHR){
        XHR.setRequestHeader("Access-Control-Allow-Origin", "*");
    }
})
.done (function(response){})
.fail (function (XHR, textStatus, errorThrown) {
    $('pcaResult').append(XHR);
    $('pcaResult').append(textStatus);
    $('pcaResult').append(errorThrown);
})
.always(function(response){
    $('pcaResult').append(response);
}); // end of always and var jqxhr
}

</script>

<style type="text/css">

.formRow .control
{
    width:250px;
}
.pcaAutoComplete .inputArea .search {
    height: 30px;
}
</style>
<div class="clear h20"></div>
<div class="box">
    <div id="container">
        <script type="text/javascript">
            var searchTermURL      = document.URL;
            var searchTermURLsplit  = searchTermURL.split("?");
            var searchTermURLsplitAgain = searchTermURLsplit[1].split("=");
            var pFcrmUserID        = searchTermURLsplitAgain[1];
        </script>
        <form NAME="pcaSearchTermForm" ACTION="" METHOD="GET">
            <INPUT TYPE="button" NAME="button" Value="Import into Oracle Fusion CRM"
onClick="pcaImportIntoFcrm(this.form,pFcrmUserID)">
        </form>
    </div>
    <div id="pcaResult" class="pcaResult"></div>

    <div class="formRow Top">
        <link rel="stylesheet" type="text/css" href="http://services.postcodeanywhere.co.uk/css/captureplus-1.34.min.css?key=UA93-
NT23-JC37-GD2" />
        <script type="text/javascript" src="https://services.postcodeanywhere.co.uk/js/captureplus-1.31.js?key=UA93-NT23-JC37-
GD23&app=7649"></script>
        <div style="width:690px; margin-left:auto; margin-right:auto; margin-top:14px; margin-bottom:40px;">
            <div id="ua93nt23jc37gd237649"></div>
        </div>
    </div>

    <div style="width:450px; float:left;">
    <div class="formRow Top">
        <label for="CompanyParts">
            Company</label>
        <div class="control">
            <input id="CompanyParts" name="CompanyParts" type="text" value="" />
        </div>

        <div class="clear h0">
        </div>
    </div>
    <div class="formRow">
        <label for="Line1Parts">
            Line1</label>
        <div class="control">
            <input id="Line1Parts" name="Line1Parts" type="text" value="" />
        </div>

        <div class="clear h0">
        </div>
    </div>
    <div class="formRow">
        <label for="Line2Parts">
            Line2</label>
        <div class="control">
            <input id="Line2Parts" name="Line2Parts" type="text" value="" />
        </div>

        <div class="clear h0">
        </div>
    </div>
</div>

```

Postcode Anywhere and Oracle Fusion CRM Integration Summary

```
<div class="formRow">
  <label for="Line3Parts">
    Line3</label>
  <div class="control">
    <input id="Line3Parts" name="Line3Parts" type="text" value="" />
  </div>

  <div class="clear h0">
  </div>
</div>
<div class="formRow">
  <label for="TownParts">
    Town</label>
  <div class="control">
    <input id="TownParts" name="TownParts" type="text" value="" />
  </div>

  <div class="clear h0">
  </div>
</div>
<div class="formRow">
  <label for="CountyParts">
    State/Province</label>
  <div class="control">
    <input id="CountyParts" name="CountyParts" type="text" value="" />
  </div>

  <div class="clear h0">
  </div>
</div>
<div class="formRow">
  <label for="PostcodeParts">
    Postcode</label>
  <div class="control">
    <input id="PostcodeParts" name="PostcodeParts" type="text" value="" />
  </div>
  <div class="clear h0">
  </div>
</div>

<div class="clear h0">
</div>

<div class="formRow">
  <label for="CountryParts">
    Country</label>
  <div class="control">
    <input id="CountryParts" name="CountryParts" type="text" value="" />
  </div>

  <div class="clear h0">
  </div>
</div>
</div>

<div style="float:left; width:300px; height:369px; border-bottom: 1px solid #d7d7d7;">
  <textarea id="AddressLabel" style="margin-left: 27px; margin-top: 20px; height: 290px; text-align:center; font-
size:14px; line-height:20px;"></textarea>
  <div class="clear h0"></div>
</div>

</div>
</body>
</html>
```


Appendix C: CreateFCRMSalesPartyREST.java

```
package createFCRMSalesParty;

import FCRMSalesParty.SalesPartyServiceSoapHttpPortClient;
import FCRMSalesParty.ServiceException;
import java.util.*;
import javax.ws.rs.GET;
import javax.ws.rs.Path;
import javax.ws.rs.Produces;
import javax.ws.rs.QueryParam;

@Path("/createFCRMSalesParty")
public class CreateFCRMSalesPartyREST {
    @GET
    @Produces("text/plain")
    //Read
    public String createFCRMSalesParty(@QueryParam("pPartyName") String pPartyName
        ,@QueryParam("pAddress1") String pAddress1
        ,@QueryParam("pAddress2") String pAddress2
        ,@QueryParam("pAddress3") String pAddress3
        ,@QueryParam("pCity") String pCity
        ,@QueryParam("pState") String pState
        ,@QueryParam("pPostalCode") String pPostalCode
        ,@QueryParam("pCountry") String pCountry
        ,@QueryParam("pFcrmUserID") String pFcrmUserID
    )
    {
        String salesPartyClientResponse = new String();
        try {salesPartyClientResponse =
            SalesPartyServiceSoapHttpPortClient.SalesPartyClient(pPartyName, pAddress1, pAddress2, pAddress3,
            pCity, pState, pPostalCode, pCountry, pFcrmUserID);
        } catch (ServiceException e) {
            e.printStackTrace();
        }
        return ("The Sales Party: \"\" + pPartyName + "\", is in Oracle Fusion CRM with Sales Registry ID: \"\" + salesPartyClientResponse
        + ".");
    }
}
```

Appendix D: LocationServiceSoapHttpPortClient.java

```
package proxy;

import com.sun.xml.ws.api.addressing.AddressingVersion;
import com.sun.xml.ws.api.addressing.WSEndpointReference;
import com.sun.xml.ws.developer.WSBindingProvider;
import com.sun.xml.ws.message.StringHeader;

import java.net.Authenticator;

import java.util.List;
import java.util.Map;
import java.util.UUID;

import javax.xml.bind.JAXBElement;
import javax.xml.ws.WebServiceRef;

import proxy.types.Conjunction;
import proxy.types.FindControl;
import proxy.types.FindCriteria;
import proxy.types.Location;
import proxy.types.LocationInformation;
import proxy.types.LocationResult;
import proxy.types.ObjectFactory;
import proxy.types.ViewCriteria;

import proxy.types.ViewCriteriaItem;
import proxy.types.ViewCriteriaRow;

import weblogic.wsee.jws.jaxws.owsm.SecurityPoliciesFeature;
// !THE CHANGES MADE TO THIS FILE WILL BE DESTROYED IF REGENERATED!
// This source file is generated by Oracle tools
// Contents may be subject to change
// For reporting problems, use the following
// Version = Oracle WebServices (11.1.1.0.0, build 111209.0821.28162)

public class LocationServiceSoapHttpPortClient
{
    @WebServiceRef
    private static LocationService_Service locationService_Service;

    static String pAddress1;
    static String pAddress2;
    static String pAddress3;
    static String pCity;
    static String pState;
    static String pPostalCode;
    static String pCountry;

    public static String LocationClient(
        String pAddress1
        ,String pAddress2
        ,String pAddress3
        ,String pCity
        ,String pState
        ,String pPostalCode
        ,String pCountry) throws ServiceException {

        System.out.println(pAddress1 + " " + pCity + " " + pState + " " + pPostalCode + " " + pCountry);

        locationService_Service = new LocationService_Service();
        // Configure security feature
        SecurityPoliciesFeature securityFeatures =
            new SecurityPoliciesFeature(new String[] { "oracle/wss_username_token_over_ssl_client_policy" });
        LocationService locationService = locationService_Service.getLocationServiceSoapHttpPort(securityFeatures);

        // Add your code to call the desired methods.
        MyAuthenticator myAuth = new MyAuthenticator("matt.hooper@infusion.com","XeJcome10");
        Authenticator.setDefault(myAuth);

        // Get the request context to set the outgoing addressing properties
        WSBindingProvider wsbp = (WSBindingProvider)locationService;

        Map<String, Object> requestContext = wsbp.getRequestContext();

        //Map to appropriate Fusion user ID, no need to provide password with SAML authentication
        requestContext.put(WSBindingProvider.USERNAME_PROPERTY, "matt.hooper@infusion.com");
        requestContext.put(WSBindingProvider.PASSWORD_PROPERTY, "XeJcome10");

        try {

            FindCriteria findCriteria = new FindCriteria();

            findCriteria.setFetchStart(0);
            findCriteria.setFetchSize(-1);

            // Here is the filter to retrieve Locations that match the input
```

Postcode Anywhere and Oracle Fusion CRM Integration Summary

```

ViewCriteria vc;
ViewCriteriaRow vcr;
ViewCriteriaItem vci;

// a Filter is a Group including ViewCriteria
// <ns2:filter>
//   <ns2:conjunction>And</ns2:conjunction>
vc = new ViewCriteria();
vc.setConjunction(Conjunction.fromValue("And"));
// a ViewCriteria is made of ViewCriteriaRow(s)
//   <ns2:group>
//     <ns2:conjunction>And</ns2:conjunction>
//     <ns2:upperCaseCompare>>false</ns2:upperCaseCompare>
vcr = new ViewCriteriaRow();
vcr.setConjunction(Conjunction.fromValue("And"));
vcr.setUpperCaseCompare(true);
// a ViewCriteriaRow is made of ViewCriteriaItem(s)
//
//<typ1:item>
//   <typ1:conjunction>And</typ1:conjunction>
//   <typ1:upperCaseCompare>>true</typ1:upperCaseCompare>
//   <typ1:attribute>Address1</typ1:attribute>
//   <typ1:operator>=</typ1:operator>
//   <typ1:value>Infusion St.</typ1:value>
//</typ1:item>
//<typ1:item>
//   <typ1:conjunction>And</typ1:conjunction>
//   <typ1:upperCaseCompare>>true</typ1:upperCaseCompare>
//   <typ1:attribute>City</typ1:attribute>
//   <typ1:operator>=</typ1:operator>
//   <typ1:value>Liberty Corner</typ1:value>
//</typ1:item>
//<typ1:item>
//   <typ1:conjunction>And</typ1:conjunction>
//   <typ1:upperCaseCompare>>true</typ1:upperCaseCompare>
//   <typ1:attribute>State</typ1:attribute>
//   <typ1:operator>=</typ1:operator>
//   <typ1:value>NJ</typ1:value>
//</typ1:item>
//<typ1:item>
//   <typ1:conjunction>And</typ1:conjunction>
//   <typ1:upperCaseCompare>>true</typ1:upperCaseCompare>
//   <typ1:attribute>PostalCode</typ1:attribute>
//   <typ1:operator>=</typ1:operator>
//   <typ1:value>07938</typ1:value>
//</typ1:item>
//<typ1:item>
//   <typ1:conjunction>And</typ1:conjunction>
//   <typ1:upperCaseCompare>>true</typ1:upperCaseCompare>
//   <typ1:attribute>Country</typ1:attribute>
//   <typ1:operator>=</typ1:operator>
//   <typ1:value>US</typ1:value>
//</typ1:item>

vci = new ViewCriteriaItem();
vci.setConjunction(Conjunction.fromValue("And"));
vci.setUpperCaseCompare(true);
vci.setAttribute("Address1");
vci.setOperator("=");
vci.getValue().add(pAddress1);
vcr.getItem().add(vci);
/*
vci = new ViewCriteriaItem();
vci.setConjunction(Conjunction.fromValue("And"));
vci.setUpperCaseCompare(true);
vci.setAttribute("Address2");
vci.setOperator("=");
vci.getValue().add(pAddress2);
vcr.getItem().add(vci);

vci = new ViewCriteriaItem();
vci.setConjunction(Conjunction.fromValue("And"));
vci.setUpperCaseCompare(true);
vci.setAttribute("Address3");
vci.setOperator("=");
vci.getValue().add(pAddress3);
vcr.getItem().add(vci);
*/
vci = new ViewCriteriaItem();
vci.setConjunction(Conjunction.fromValue("And"));
vci.setUpperCaseCompare(true);
vci.setAttribute("City");
vci.setOperator("=");
vci.getValue().add(pCity);
vcr.getItem().add(vci);

vci = new ViewCriteriaItem();
vci.setConjunction(Conjunction.fromValue("And"));
vci.setUpperCaseCompare(true);
vci.setAttribute("State");
vci.setOperator("=");

```

Postcode Anywhere and Oracle Fusion CRM Integration Summary

```

vci.getValue().add(pState);
vcr.getItem().add(vci);

vci = new ViewCriteriaItem();
vci.setConjunction(Conjunction.fromValue("And"));
vci.setUpperCaseCompare(true);
vci.setAttribute("PostalCode");
vci.setOperator("=");
vci.getValue().add(pPostalCode);
vcr.getItem().add(vci);

vci = new ViewCriteriaItem();
vci.setConjunction(Conjunction.fromValue("And"));
vci.setUpperCaseCompare(true);
vci.setAttribute("Country");
vci.setOperator("=");
vci.getValue().add(pCountry);
vcr.getItem().add(vci);

vc.getGroup().add(vcr);
findCriteria.setFilter(vc);

findCriteria.setExcludeAttribute(false);

FindControl findControl = new FindControl();
findControl.setRetrieveAllTranslations(false);

// first we will try to see if a Location with these attributes already exists.
LocationResult findLocation = locationService.findLocation(findCriteria, findControl);
List<Location> locationList = findLocation.getValue();

if (locationList.size() == 0) { // no locations with these criteria found, so create a new Location
    System.out.println("No Locations exist already. Proceeding to create new Location");

    Location locationToBeCreated = new Location();
    ObjectFactory factory = new ObjectFactory();

    locationToBeCreated.setAddress1(pAddress1);
    locationToBeCreated.setAddress2(factory.createLocationAddrElementAttribute2(pAddress2));
    locationToBeCreated.setAddress3(factory.createLocationAddrElementAttribute2(pAddress3));
    locationToBeCreated.setCity(factory.createLocationCity(pCity));
    locationToBeCreated.setState(factory.createLocationState(pState));
    locationToBeCreated.setPostalCode(factory.createLocationPostalCode(pPostalCode));
    locationToBeCreated.setCountry(pCountry);
    locationToBeCreated.setCreatedByModule(factory.createLocationCreatedByModule("HZ_IMPORT"));

    // call method createLocation
    LocationResult returnedLocationResult = locationService.createLocation(locationToBeCreated);

    List<Location> returnedLocationList = returnedLocationResult.getValue();
    Location returnedLocation = returnedLocationList.get(0); // List should only have one element

    System.out.println("Location: LocationId is: " + returnedLocation.getLocationId().toString());
    return returnedLocation.getLocationId().toString();
} // end of if no locations with these criteria found
{ // else at least one Location was found. We will use the first Location in the returned List
    System.out.println("Locations exist already. We will use the first Location found.");
    Location location = locationList.get(0);
    System.out.println("Location: LocationId is: " + location.getLocationId().toString());
    return location.getLocationId().toString();
} // end of else
} catch (ServiceException e) {
    System.out.println(e.getMessage());
}

System.out.println("Error with Location. We should not get here"); // designates error
return "00000000";
}

public static void main(String[] args) throws Exception {
    Object locationClient;
    System.out.println("Getting ready to call LocationClient");
    String LocationClientOut = LocationClient("Infusion St.", "Infusion Plaza", "Infusion Business
District", "Newark", "NJ", "07938", "DE");
    System.out.println(LocationClientOut);
}
}

```

Appendix E: SalesPartyServiceSoapHttpPortClient.java

```

package FCRMSalesParty;

import com.oracle.xmlns.adf.svc.types.Conjunction;

import com.sun.xml.ws.api.addressing.AddressingVersion;
import com.sun.xml.ws.api.addressing.WSEndpointReference;
import com.sun.xml.ws.developer.WSBindingProvider;
import com.sun.xml.ws.message.StringHeader;

import com.oracle.xmlns.adf.svc.types.FindControl;
import com.oracle.xmlns.adf.svc.types.FindCriteria;
import com.oracle.xmlns.adf.svc.types.ViewCriteria;
import com.oracle.xmlns.adf.svc.types.ViewCriteriaItem;
import com.oracle.xmlns.adf.svc.types.ViewCriteriaRow;
import com.oracle.xmlns.apps.cdm.foundation.parties.organizationservice.OrganizationParty;
import com.oracle.xmlns.apps.cdm.foundation.parties.organizationservice.OrganizationPartyResult;
import com.oracle.xmlns.apps.cdm.foundation.parties.organizationservice.OrganizationProfile;
import com.oracle.xmlns.apps.cdm.foundation.parties.party.service.PartySite;
import com.oracle.xmlns.apps.cdm.foundation.parties.party.service.PartySiteUse;
import com.oracle.xmlns.apps.cdm.foundation.parties.party.service.PartyUsageAssignment;
import com.oracle.xmlns.apps.crmcommon.salesparties.salespartieservice.ObjectFactory;
import com.oracle.xmlns.apps.crmcommon.salesparties.salespartieservice.SalesAccount;
import com.oracle.xmlns.apps.crmcommon.salesparties.salespartieservice.SalesAccountResource;
import com.oracle.xmlns.apps.crmcommon.salesparties.salespartieservice.SalesParty;

import com.sun.xml.ws.developer.WSBindingProvider;

import proxy.*;

import java.io.FileOutputStream;

import java.net.Authenticator;

import java.util.List;
import java.util.Map;
import java.util.UUID;

import javax.xml.bind.JAXBContext;
import javax.xml.bind.JAXBElement;
import javax.xml.bind.Marshaller;
import javax.xml.ws.WebServiceRef;

import webllogic.wsee.jws.jaxws.owsm.SecurityPoliciesFeature;
// This source file is generated by Oracle tools.
// Contents may be subject to change.
// For reporting problems, use the following:
// Generated by Oracle JDeveloper 11g Release 2 11.1.2.3.0.6276

public class SalesPartyServiceSoapHttpPortClient {
    public static String SalesPartyClient(
        String pPartyName
        ,String pAddress1
        ,String pAddress2
        ,String pAddress3
        ,String pCity
        ,String pState
        ,String pPostalCode
        ,String pCountry
        ,String pFcrmUserID) throws ServiceException {
        SalesPartyService_Service salesPartyService_Service = new SalesPartyService_Service();

        // Configure security feature
        SecurityPoliciesFeature securityFeatures =
            new SecurityPoliciesFeature(new String[] { "oracle/wss_username_token_over_ssl_client_policy" });
        SalesPartyService salesPartyService =
            salesPartyService_Service.getSalesPartyServiceSoapHttpPort(securityFeatures);

        FCRMSalesParty.MyAuthenticator myAuth = new FCRMSalesParty.MyAuthenticator("matt.hooper@infusion.com","XeJcome10");
        Authenticator.setDefault(myAuth);

        // Get the request context to set the outgoing addressing properties
        WSBindingProvider wsbp = (WSBindingProvider)salesPartyService;

        Map<String, Object> requestContext = wsbp.getRequestContext();

        //Map to appropriate Fusion user ID, no need to provide password with SAML authentication
        requestContext.put(WSBindingProvider.USERNAME_PROPERTY, "matt.hooper@infusion.com");
        requestContext.put(WSBindingProvider.PASSWORD_PROPERTY, "XeJcome10");

        // Add your code to call the desired methods.

        FindCriteria findCriteria = new FindCriteria();

        findCriteria.setFetchStart(0);
        findCriteria.setFetchSize(-1);
        findCriteria.setExcludeAttribute(false);

```

Postcode Anywhere and Oracle Fusion CRM Integration Summary

```

// Here is the filter to retrieve records that match the input

ViewCriteria vc;
ViewCriteriaRow vcr;
ViewCriteriaItem vci;

// a Filter is a Group including ViewCriteria
// <ns2:filter>
//   <ns2:conjunction>And</ns2:conjunction>
vc = new ViewCriteria();
vc.setConjunction(Conjunction.fromValue("And"));
// a ViewCriteria is made of ViewCriteriaRow(s)
//   <ns2:group>
//     <ns2:conjunction>And</ns2:conjunction>
//     <ns2:upperCaseCompare>false</ns2:upperCaseCompare>
vcr = new ViewCriteriaRow();
vcr.setConjunction(Conjunction.fromValue("And"));
vcr.setUpperCaseCompare(true);
// a ViewCriteriaRow is made of ViewCriteriaItem(s)
//   <typl:item>
//     <typl:conjunction>And</typl:conjunction>
//     <typl:upperCaseCompare>true</typl:upperCaseCompare>
//     <typl:attribute>PartyName</typl:attribute>
//     <typl:operator>=</typl:operator>
//     <typl:value>CVV International</typl:value>

vci = new ViewCriteriaItem();
vci.setConjunction(Conjunction.fromValue("And"));
vci.setUpperCaseCompare(true);
vci.setAttribute("PartyName");
vci.setOperator("=");
vci.getValue().add(pPartyName);
vcr.getItem().add(vci);

vc.getGroup().add(vcr);
findCriteria.setFilter(vc);

findCriteria.setExcludeAttribute(false);

FindControl findControl = new FindControl();
findControl.setRetrieveAllTranslations(false);

try {
    List<SalesParty> salesList = salesPartyService.findSalesParty(findCriteria,findControl);

    if (salesList.size() == 0) { // SalesParty does not already exist, so create a new one.

        System.out.println("SalesParty not found so we will now proceed to create SalesParty");

        // Create Object Factories
        // Create an Object Factory for organizations
        com.oracle.xmlns.apps.cdm.foundation.parties.organizationservice.ObjectFactory
        organizationFactory = new com.oracle.xmlns.apps.cdm.foundation.parties.organizationservice.ObjectFactory ();

        // Create an Object Factory for Parties - will be important for Party Sites
        com.oracle.xmlns.apps.cdm.foundation.parties.partyservice.ObjectFactory
        partyFactory = new com.oracle.xmlns.apps.cdm.foundation.parties.partyservice.ObjectFactory();

        // Create an Object Factory for SalesParties.
        // It is currently found in com.oracle.xmlns.apps.crmcommon.salesparties.salespartieservice
        ObjectFactory salesPartyFactory = new ObjectFactory();

        // create an Organization Profile
        OrganizationProfile organizationProfileToBeCreated = new OrganizationProfile();
        organizationProfileToBeCreated.setOrganizationName(pPartyName);

organizationProfileToBeCreated.setCreatedByModule(organizationFactory.createOrganizationProfileCreatedByModule("HZ_IMPORT"));

        // create a PartySite
        PartySite partySiteToBeCreated = new PartySite();

        // Party Sites need a location created by CreateLocation
        String locationId = LocationServiceSoapHttpClient.LocationClient(pAddress1, pAddress2, pAddress3, pCity,
pState, pPostalCode, pCountry);
        if (locationId == "000000") {
            System.out.println("From SalesPartyClient: Call to LocationClient had errors, stopping ...");
            return "000000000";
        }
        System.out.println("SalesParty: LocationId is: " + locationId);

        Long locationIdLong = new Long(locationId);
        partySiteToBeCreated.setLocationId(locationIdLong);
        partySiteToBeCreated.setCreatedByModule(partyFactory.createPartySiteCreatedByModule("HZ_IMPORT"));
        partySiteToBeCreated.setPartySiteType(partyFactory.createPartySiteUseSiteUseType("SELL_TO"));

        // create a PartySiteUse
        PartySiteUse partySiteUseToBeCreated = new PartySiteUse();
        partySiteUseToBeCreated.setCreatedByModule(partyFactory.createPartySiteCreatedByModule("HZ_IMPORT"));

```

Postcode Anywhere and Oracle Fusion CRM Integration Summary

```

partySiteUseToBeCreated.setSiteUseType(partyFactory.createPartySiteUseSiteUseType("SELL_TO"));

// add the PartySiteUse to the PartySite
partySiteToBeCreated.getPartySiteUse().add(partySiteUseToBeCreated);

// create a Party Usage
PartyUsageAssignment partyUsageAssignmentToBeCreated = new PartyUsageAssignment ();
partyUsageAssignmentToBeCreated.setPartyUsageCode("SALES_ACCOUNT");
partyUsageAssignmentToBeCreated.setStatusFlag(true);
partyUsageAssignmentToBeCreated.setCreatedByModule("HZ_IMPORT");

// we need to create a Sales Account
SalesAccount salesAccountToBeCreated = new SalesAccount();

// we need to create a Sales Account Resource
SalesAccountResource salesAccountResourceToBeCreated = new SalesAccountResource();

Long resourceIdToBeCreated = new Long(pFcrmUserID);

salesAccountResourceToBeCreated.setResourceId(salesPartyFactory.createSalesAccountResourceResourceId(resourceIdToBeCreated));
salesAccountResourceToBeCreated.setLockAssignmentFlag(true);

salesAccountResourceToBeCreated.setAssignmentTypeCode(salesPartyFactory.createSalesAccountResourceAssignmentTypeCode("MANUAL"));

// add the Sales Account Resource to the Sales Account
salesAccountToBeCreated.getSalesAccountResource().add(salesAccountResourceToBeCreated);

// we need to create an Organization Party
OrganizationParty organizationPartyToBeCreated = new OrganizationParty();

organizationPartyToBeCreated.setCreatedByModule(organizationFactory.createOrganizationPartyCreatedByModule("HZ_IMPORT"));
organizationPartyToBeCreated.getOrganizationProfile().add(organizationProfileToBeCreated);
organizationPartyToBeCreated.getPartySite().add(partySiteToBeCreated);
organizationPartyToBeCreated.getPartyUsageAssignment().add(partyUsageAssignmentToBeCreated);

SalesParty salesPartyToBeCreated = new SalesParty();
salesPartyToBeCreated.setPartyName(pPartyName); // not sure if this can be set here.tbd.
salesPartyToBeCreated.setStatus("A");
salesPartyToBeCreated.setPartyType("ORGANIZATION");

salesPartyToBeCreated.getOrganizationParty().add(organizationPartyToBeCreated);
salesPartyToBeCreated.getSalesAccount().add(salesAccountToBeCreated);

// call method createSalesParty
System.out.println(salesPartyToBeCreated);

SalesParty returnedSalesParty = salesPartyService.createSalesParty(salesPartyToBeCreated);

String returnedPartyNumber = returnedSalesParty.getOrganizationParty().get(0).getPartyNumber();
// return the SalesParty Id just created
System.out.println(returnedPartyNumber);
return returnedPartyNumber;
}
// else SalesParty already exists
System.out.println("SalesParty found so we will not create SalesParty. For now we will report Party Number of
first Sales party found");
// Iterating through SalesParty List
for (int i = 0; i < 1; i++) { // just get the first SalesParty in list
    SalesParty salesParty = salesList.get(i);

    System.out.println(salesParty.getPartyNumber());
    return salesParty.getPartyNumber();
} // end of for
} // end of else
} catch (Exception ex) {
    ex.printStackTrace();
}
System.out.println("Sales Party Error, we shouldn't get to here.");
return "00000000"; // 00000000 denotes error
}

public static void main(String[] args) throws Exception {
    System.out.println("Getting ready to call SalesPartyClient");
    String SalesPartyClientOut = SalesPartyClient("CJV International Arkansas HQ","Infusion St.,""Infusion Plaza","Infusion
Business District","Liberty Corner","AR","07938","US","300000001398160");
    System.out.println(SalesPartyClientOut);
}
}

```